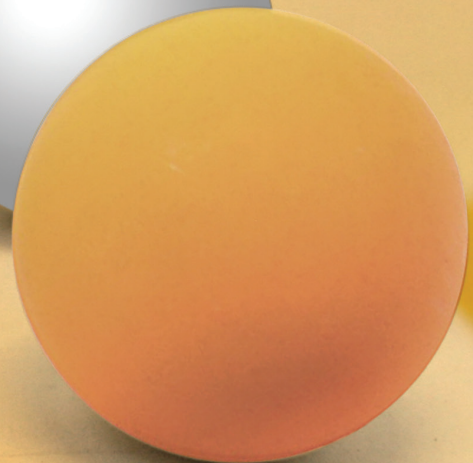
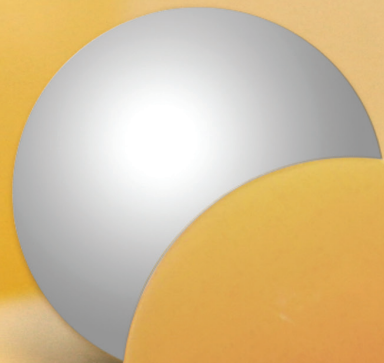
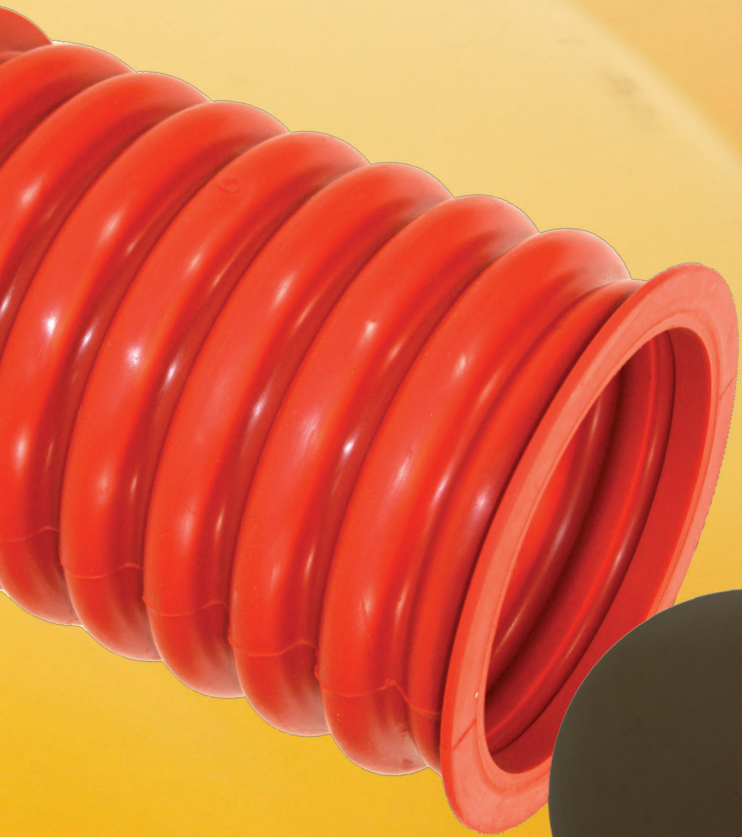


# ***ARUBIS***

PRODUCT CATALOGUE





## MOLDED CORRUGATED SLEEVES

### ROTEX™ DESIGN

Molded corrugated Sleeves specially developed for ROTEX gyratory equipment. Inside diameter with groove, which corresponds to bead ring of the inlets and outlets.

- **Natural Rubber:**

Excellent abrasion resistance

Most used for dry material sifting

- **Neoprene Rubber:**

Oil and grease resistant

Temperatures up to 80°C

- **EPDM Rubber:**

Resistant to oxygenated solvents and acids, weather resistant. Temp. up to 120°C

- **Silicone Rubber:**

Most used for wet material processing. Resists from -50°C up to 220°C



ARUBIS REF	DIAMETER	MATERIAL	COMPLIANT WITH FDA/EC1935-2004
AR10NRB	10"	NATURAL RUBBER BLACK	NO
AR10NRR	10"	NATURAL RUBBER RED	NO
AR10CRW	10"	NEOPRENE WHITE	YES
AR10EPW	10"	EPDM WHITE	YES
AR10SIW	10"	SILICONE WHITE	YES
AR08NRB	8"	NATURAL RUBBER BLACK	NO
AR08NRR	8"	NATURAL RUBBER RED	NO
AR08CRW	8"	NEOPRENE WHITE	YES
AR08EPW	8"	EPDM WHITE	YES
AR08SIW	8"	SILICONE WHITE	YES
AR06NRB	6"	NATURAL RUBBER BLACK	NO
AR06NRR	6"	NATURAL RUBBER RED	NO
AR06CRW	6"	NEOPRENE WHITE	YES
AR06EPW	6"	EPDM WHITE	YES
AR06SIW	6"	SILICONE WHITE	YES
AR04NRB	4"	NATURAL RUBBER BLACK	NO
AR04NRR	4"	NATURAL RUBBER RED	NO
AR04CRW	4"	NEOPRENE WHITE	YES
AR04EPW	4"	EPDM WHITE	YES
AR04SIW	4"	SILICONE WHITE	YES



## MOLDED CORRUGATED SLEEVES

### SWECO™ DESIGN

Molded corrugated Sleeves specially developed for Sweco gyratory equipment.

With cuffs allowing secure clamping

- **Natural Rubber:**

Excellent abrasion resistance. Most used for dry material sifting

- **Neoprene Rubber:**

Oil and grease resistant. Temperatures up to 80°C

- **EPDM Rubber:**

Resistant to oxygenated solvents and acids, weather resistant. Temp. up to 120°C

- **Silicone Rubber:**

Most used for wet material processing. Resists from -50°C up to 220°C



ARUBIS REF	DIAMETER	MATERIAL	COMPLIANT WITH FDA / EC1935-2004
AS08NRB	8"	black natural gum	no
AS08CRW	8"	white neoprene	yes
AS08CRB	8"	black neoprene	no
AS08SIR	8"	red silicone	yes
AS06NRB	6"	black natural gum	no
AS06CRW	6"	white neoprene	yes
AS06CRB	6"	black neoprene	no
AS06SIR	6"	red silicone	yes
AS04SIR	4"	red silicone	yes

## SCREEN CLEANING BALLS



*For continuous screening **without interruptions**. Arubis will deliver the appropriate quality with **outstanding wear resistance** and active cleaning and deblinding.*

- **Clear Polyurethane:**

Best wear resistance, oil and grease resistant, active bouncing effect > 70%  
Compared to some rubber qualities, the wear resistance is up to 10 times better.

- **Neoprene Rubber:**

Oil and grease resistant, temp. to 80°C

- **Silicone Rubber:**

Most used for wet material processing.  
Resists to -50°C up to 220°C

- **Natural Rubber:**

Excellent abrasion resistance.  
Most used for dry material sifting, very good rebound

- **EPDM Rubber:**

resistant to oxygenated solvents and acids, weather resistant. Temp. up to 120°C



## SCREEN CLEANING BALLS - STANDARD TYPES

Other types on demand.

Please send inquiry with: material to be sifted, temperature, ...

Orders per set of 100 pieces.

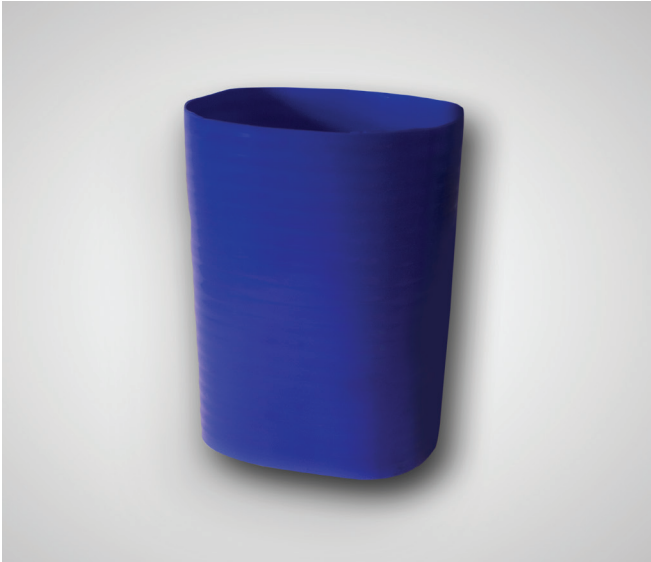
ARUBIS REF	DIAMETER	MATERIAL	COMPLIANT WITH FDA
AB12PUC80	12 MM	POLYURETHANE CLEAR 80SH	YES
AB16NRB55	16 MM	NATURAL GUM 55SH BLACK	NO
AB16PMG	16 MM	POLYURETHANE MAGNETIC GRAY	YES
AB16PUC80	16 MM	POLYURETHANE CLEAR 80SH	YES
AB180NBB60	180 MM	NITRIL BLACK 60SH	NO
AB18NRB55	18 MM	NATURAL GUM BLACK 55SH	NO
AB18NRW50	18 MM	NATURAL GUM WHITE 50SH	YES
AB18NRW90	18 MM	NATURAL GUM WHITE 90/95SH	NO
AB18PUW60	18 MM	POLYURETHANE WHITE 60SH	YES
AB18SIC60	18 MM	SILICONE CLEAR 60SH	YES
AB18SIW40	18 MM	SILICONE WHITE 40SH	YES
AB20PUC80	20 MM	POLYURETHANE CLEAR 80SH	YES
AB23SIC60	23 MM	SILICONE CLEAR 60SH	YES
AB25BUB60	25 MM	BUTYL BLACK 60SH	NO
AB25CRB60	25 MM	NEOPRENE BLACK 60SH	NO
AB25CRW55	25 MM	NEOPRENE WHITE 55SH	YES
AB25NRB55	25 MM	NATURAL GUM BLACK 55SH	NO
AB25NRN45	25 MM	NATURAL GUM 45SH	NO
AB25NRW50	25 MM	NATURAL GUM WHITE 50SH	YES
AB25PBB60	25 MM	NATURAL GUM BLACK 60SH (NR/PB)	NO
AB25PUC75	25 MM	POLYURETHAN CLEAR 75SH	YES
AB25SICX2	25 MM	SILICONE CLEAR 60SH WITH METALIC CORE DIA 2MM	YES
AB25SIW40	25 MM	SILICONE WHITE 40SH	YES
AB26NBW	26 MM	NITRILE WHITE 50SH	YES
AB26NRB	26 MM	NATURAL GUM BLACK 55SH	NO
AB26NRW50	26 MM	NATURAL GUM WHITE 50SH	YES
AB28PUC	28 MM	POLYURETHANE CLEAR	YES
AB30CRB60	30 MM	NEOPRENE BLACK 60SH	NO
AB30CRW50	30 MM	NEOPRENE WHITE 55SH	YES
AB30EPB50	30 MM	EPDM BLACK 50SH	NO
AB30EPW50X05	30 MM	EPDM WHITE 50SH WITH METALIC CORE DIA 5MM	YES
AB30EPW65	30 MM	EPDM WHITE 65SH	YES
AB30NRB50	30 MM	NATURAL GUM BLACK 50SH	NO
AB30NRB55	30 MM	NATURAL GUM BLACK 55SH	NO
AB30NRB60X28	30 MM	NATURAL GUM BLACK 60/65SH - WEIGHT 28-30 GR	NO
AB30NRW50	30 MM	NATURAL GUM WHITE 50SH	YES
AB30NRW50I5	30 MM	NATURAL GUM WHITE 50SH + METALIC CORE DIA 5 MM	YES
AB30NRW60	30 MM	NATURAL GUM WHITE 60SH	YES
AB30PBB60	30 MM	NATURAL GUM BLACK 65SH	NO
AB30PBW	30 MM	NATURAL GUM/POLYBUTADIEN WHITE	NO
AB30PUC70	30 MM	POLYURETHANE CLEAR 70SH	YES
AB30SIC	30 MM	SILICONE TRANSLUCENT	YES
AB30SIR60	30 MM	SILICONE RED 60SH	YES
AB30SIW40	30 MM	SILICONE WHITE 40SH	YES
AB35CR65XC	35 MM	NEOPRENE BLACK 65SH - CONDUCTIF	NO
AB35CRB50	35 MM	NEOPRENE BLACK 50SH	NO
AB35CRB60	35 MM	NEOPRENE BLACK 60SH	NO
AB35CRB65XC	35 MM	NEOPRENE BLACK 65SH - CONDUCTIF	NO
AB35CRW55	35 MM	NEOPRENE WHITE 55SH	YES

ARUBIS REF	DIAMETER	MATERIAL	COMPLIANT WITH FDA
AB35CRW55I5	35 MM	NEOPRENE WHITE 55SH + METALIC CORE DIA 5 MM	YES
AB35NRB40	35 MM	NATURAL GUM BLACK 40SH	NO
AB35NRB55X	35 MM	NATURAL GUM 55SH BLACK ABRASIONRESISTANT	NO
AB35NRBR	35 MM	NATURAL GUM BROWN	NO
AB35NRN40	35 MM	NATURAL GUM CREAM 40SH	NO
AB35NRN45	35 MM	NATURAL GUM CREAM 45SH	NO
AB35NRW50	35 MM	NATURAL GUM WHITE 50SH	YES
AB35NRW50I5	35 MM	NATURAL GUM WHITE 50SH WITH METALIC CORE DIA 5 MM	YES
AB35NRW60	35 MM	NATURAL GUM WHITE 60SH	YES
AB35PUC75	35 MM	POLYURETHANE CLEAR 75SH	YES
AB35SIC60	35 MM	SILICONE TRANSLUCENT 60SH	YES
AB35SIR60	35 MM	SILICONE RED 60SH	YES
AB35SIW40	35 MM	SILICONE WHITE 40SH	YES
AB40CRB55	40 MM	NEOPRENE BLACK 55SH	NO
AB40CRW55	40 MM	NEOPREN GUM WHITE 55SH	YES
AB40EPW50X05	40 MM	EPDM WHITE 50SH WITH METALIC CORE DIA 5MM	YES
AB40NRB55	40 MM	NATURAL GUM BLACK 55SH	NO
AB40NRB70	40 MM	NATURAL GUMM BLACK 70SH WITH REBOND OF 65 %	NO
AB40NRW50	40 MM	NATURAL GUM WHITE 50SH	YES
AB40NRW60	40 MM	NATURAL GUM WHITE 60SH	YES
AB40PUC	40 MM	POLYURETHANE CLEAR	YES
AB40PUW60X	40 MM	POLYURETHANE WHITE 60SH	YES
AB40SIW40	40 MM	SILICON WHITE 40SH	YES
AB40SIC60	40 MM	SILICON WHITE 60SH	YES
AB42PAN	42 MM	PA66 NEUTRAL	YES
AB42PUC70	42 MM	POLYURETHANE CLEAR 70SH	YES
AB50BUB80	50 MM	BUTYL BLACK 80SH	NO
AB50CRB55	50 MM	NEOPRENE BLACK 55SH	NO
AB50CRB60	50 MM	NEOPRENE BLACK 60SH	NO
AB50CRW55	50 MM	NEOPRENE WHITE 55SH	YES
AB50EPW65	50 MM	EPDM WHITE 65SH	YES
AB50NRBR60	50 MM	NITRILE BLACK 60SH	NO
AB50NRBR60	50 MM	NITRILE BROWN 60SH	NO
AB50NRB	50 MM	NATURAL GUM BLACK 50SH (80% NR + 20% SBR)	NO
AB50NRB45	50 MM	NATURAL GUM BLACK 45SH	NO
AB50NRB50ABR	50 MM	NATURAL GUM BLACK 50SH ABRASIF	NO
AB50NRW40	50 MM	NATURAL GUM WHITE 40SH	YES
AB50NRW50	50 MM	NATURAL GUM WHITE 50SH	YES
AB50NRW60	50 MM	NATURAL GUM WHITE 60SH	YES
AB50PUC70	50 MM	POLYUTERHANE CLEAR 70SH	YES
AB50SIB60	50 MM	SILICONE BLACK 60SH	NO
AB50SIC40	50 MM	SILICONE CLEAR 40SH	YES
AB50SIC60	50 MM	SILICONE CLEAR 60SH	YES
AB50SIR60	50 MM	SILICONE RED 60SH	YES
AB50SIW40	50 MM	SILICONE WHITE 40SH	YES
AB50SIW70	50 MM	SILICONE WHITE 70SH	YES
AB55NRB85	55 MM	NATURAL GUM BLACK 85SH	NO
AB60EPW60	60 MM	EPDM WHITE 60SH	YES
AB60NRB45	60 MM	NATURAL GUM BLACK 45SH	NO
AB60NRB60	60 MM	NATURAL GUM BLACK 60SH	NO
AB70NBB70	70 MM	NITRILE BLACK 70SH	NO

## SMOOTH SILICONE HOSES (FDA)

**RESISTANT UP TO 200°**

*Normal silicone up to 200° or high temperature silicone up to 250° continuously*



- Reinforced with kevlar or non reinforced
- Thickness: 3mm
- Diameters: 100mm, 150mm, 200mm

## SMOOTH POLYURETHANE HOSES (FDA)

*Very elastic and smooth on the inside. For screeners, compensators, bulk transport...*



- up to 4 times more resistant than rubber, wall
- Thickness: 1mm
- Diameters: 100mm, 150mm, 200mm, 250mm
- Temperatures : -40° +90° C
- Super abrasion resistant
- FDA, EEC 1935/2006
- For screeners, compensators, bulk transport
- Industrie : pharma, agro , food
- No smell, no taste



## CLEANING BALLS

*Balls in naturel latex foam.*

*Use: cleaning pipes food and cleaning pipes cement industry.*



ARUBIS REF	BALL DIAMETER	HARDNESS
ACB100S	100 MM	SOFT
ACB100M	100 MM	MEDIUM
ACB100H	100 MM	HARD
ACB125S	125 MM	SOFT
ACB125M	125 MM	MEDIUM
ACB125H	125 MM	HARD
ACB150S	150 MM	SOFT
ACB150M	150 MM	MEDIUM
ACB150H	150 MM	HARD
ACB175S	175 MM	SOFT
ACB175M	175 MM	MEDIUM
ACB175H	175 MM	HARD
ACB200S	200 MM	SOFT
ACB200M	200 MM	MEDIUM
ACB200H	200 MM	HARD

## BALLAST BALLS

*Rubber or polyurethane balls with ballast which gives a much heavier ball*



- **Qualities: natural rubber, neoprene, polyurethane**

## FLOATING BALLS

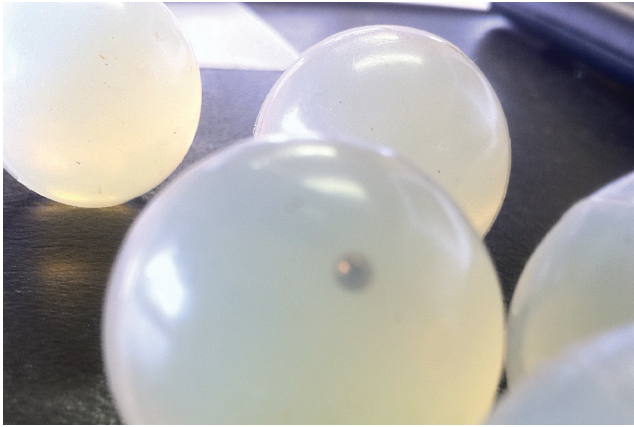
*Rubber floating balls with metal hollow core, used for valves in different applications*

ARUBIS REF	BALL DIAMETER	CORE DIAMETER	MATERIAL
ACF50/38	50 MM	38 MM	ON DEMAND
ACF63/50	63 MM	50 MM	ON DEMAND
ACF73.5/60	73.50 MM	60 MM	ON DEMAND
ACF99/76	99 MM	76 MM	ON DEMAND
ACF121/90	121 MM	90 MM	ON DEMAND
ACF151/126	151 MM	126 MM	ON DEMAND
ACF183/152	183 MM	152 MM	ON DEMAND
ACF244/202	244 MM	202 MM	ON DEMAND
ACF286/252	286 MM	252 MM	ON DEMAND
ACF333/304	333 MM	304 MM	ON DEMAND

- **Qualities: NBR, natural rubber, silicone, viton**

## DETECTABLE BALLS

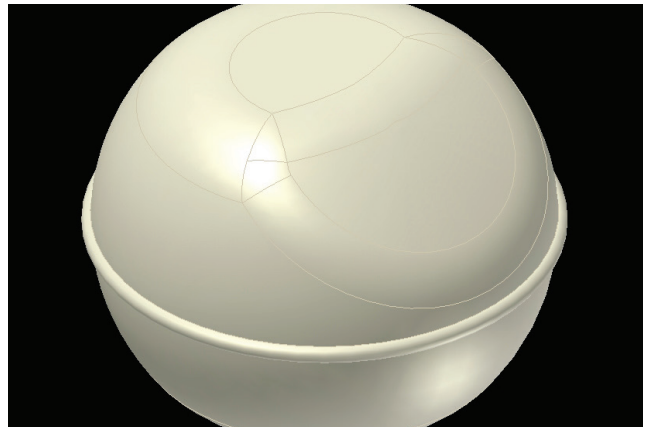
*Balls with small detectable metal ball inside*



- Qualities: natural rubber, neoprene, polyurethane

## SPECIAL BALLS

*At random rebounding, egg form*



- Qualities: natural rubber, neoprene, polyurethane

## ON DEMAND



- Qualities: natural rubber white or black, neoprene white

## PARALLELEPIPEDUM BALLS



- Qualities: natural rubber white or black, polyurethane

## SLIDERS

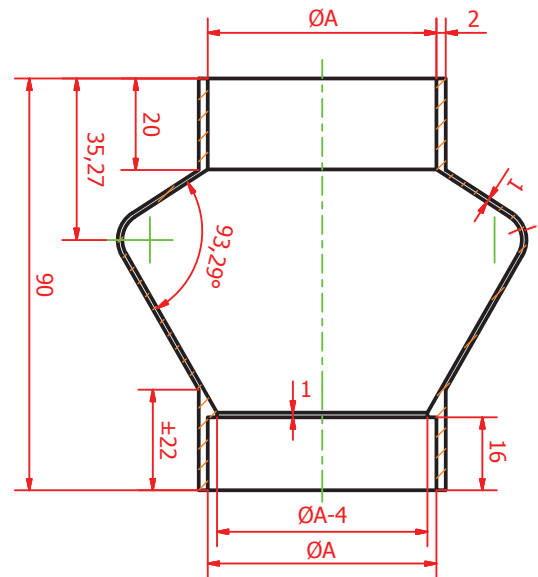


ARUBIS REF	DIMENSIONS (mm)	MATERIAL
ASL332616PA	dia 33 x dia 26 x h 16	nylon
ASL383216PA	dia 38 x dia 32 x h 16	nylon
ASL625624PA	dia 62 x dia 56 x h 24	nylon
ASL645826PA	dia 64 x dia 58 x h 26	nylon
ASL332616PU	85-90 dia 33 x dia 26 x h 16	polyurethane
ASL383216PU	85-90 dia 38 x dia 32 x h 16	polyurethane
ASL625624PU	85-90 dia 62 x dia 56 x h 24	polyurethane
ASL645826PU	85-90 dia 64 x dia 58 x h 26	polyurethane

- Qualities: nylon and polyurethane

## WEIGHING BELLOWS

The shape is such that no or very few residual material stays in the bellow, neither on the walls or on the connections!



- In transparent, very elastic silicone
- FDA / food grade

ARUBIS REF	DIMENSIONS (mm)	ARUBIS REF	DIMENSIONS (mm)
AW050SIC	50	AW150SIC	150
AW060SIC	60	AW200SIC	200
AW075SIC	75	AW250SIC	250
AW100SIC	100	AW300SIC	300
AW114SIC	114	AW350SIC	350
AW140SIC	140		



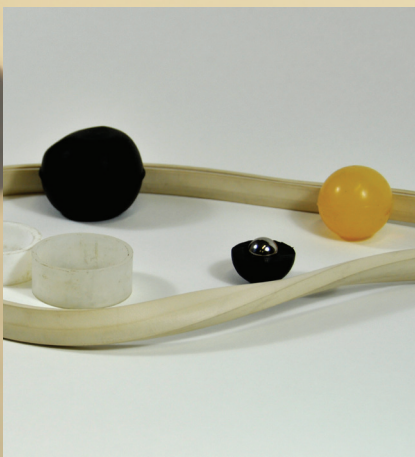


# ARUBIS

Arubis not only has a **stock of most common spare parts** for the sifting industry, but can develop rubber and plastic parts as per your demand.

Do not hesitate and send your sample together with **your requirements** to our office in Brussels so that we can elaborate a **free quotation**.

We are convinced that our **quality and price** will convince you to work with 'Arubis' for all rubber and plastic spare parts.



## **ARUBIS bvba**

Verdunstraat 742

1130 Brussel, Haren BELGIUM

Phone: +32(0)2 257 18 78

Fax: +31 840 033 410

Mobile: +32(0) 498 876 483

info@arubis.be

VAT: 0830 251 704

